

# Patented Dynamic Back



This system is ideal for clients with a strong extensor spasm and a varying muscle tone through its unique pressure controlled dynamic back. By using a variable pressure piston you are able to set the strength of the resistance of the back and the speed of its return to its original position. This enables you to



allow the extensor spasm to occur in a totally controlled fashion, eliminating any unwanted feed back or stimulation from uncontrolled movement of the seating system. The mechanism is easy to adjust and insures that any movement in the back is smooth, controlled and tailored to the individual.

The Dynamic back mechanism can be disengaged if required.

# Dynamic Footplate

Our dynamic footplate permits an amount of give, allowing for extension to take place whilst cushioning the force on both user and chair.

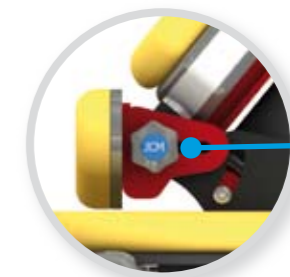


# Controlled Pelvic Positioning

While the backrest pivots from hip height, by choosing to use the optional independent sacral pad you are able to minimise the level of posterior tilt at the pelvis allowing the extensor spasm to occur without the user's pelvis sliding out of alignment. Alternatively you

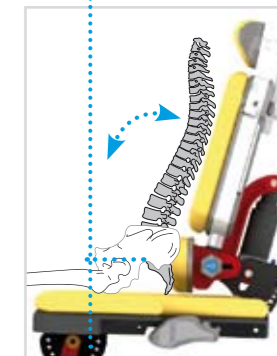
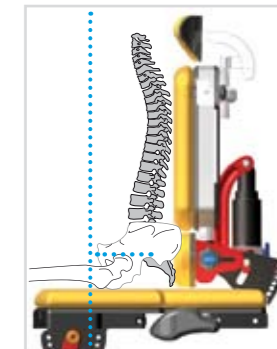
can fit a lower back pad so that the entire back moves with the user's hip position.

To ascertain the appropriate option for the user, a clinical assessment to determine the level of mobility in the hips and spine would be required.



Pivots at hip height

With the optional independent sacral pad you are able to minimise the level of posterior tilt at the pelvis



## Lower Back Pad

Shows back pivot with lower back pad, this highlights that the entire back moves with the user's hip position.



## Sacral Pad

Shows back pivot with sacral pad, this highlights that the entire back moves without the user's pelvis sliding out of alignment.

